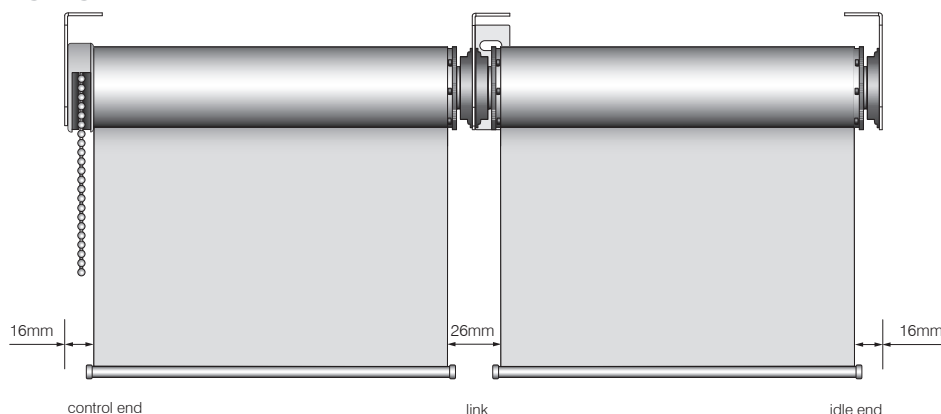


SYSTEM SPECIFICATIONS

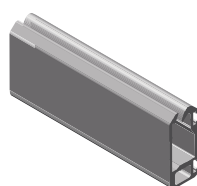
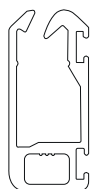
Minimum width	800mm
Maximum width	3400mm
Maximum drop	3800mm
Linkable	Yes, up to 3 blinds
Gear ratio	1 : 1
Minimum recess dimensions: (for single blinds)	Width 130mm / Height 120mm
Light gaps: (see diagram)	Control side 16mm Idle end side 16mm Between linked blinds 26mm

Light gaps



TECHNICAL INFORMATION: BASEBARS

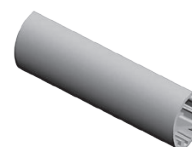
Size	The Force – Silent 31x13mm, Premium 33x13mm Oval 26x15mm, Round 22mm
Standard colours	Anodised, White, Shoji White, Barrister White, Barley, Dune, Black
Options	Custom powder coating available



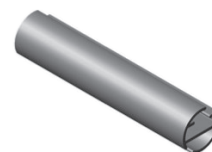
The Force – Silent
31x13mm



Premium
33x13mm



Oval
26x15mm



Round
22mm

MT600

**INTERNAL MANUAL
ROLLER BLINDS**



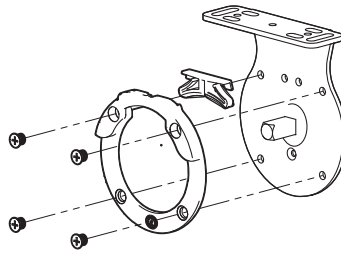
The **MT600** heavy duty chain operated system is extremely versatile and is ideal for medium to large windows in both domestic and commercial applications.

This premium system features a 1 : 1 gear ratio for fast operation and is assisted by a heavy duty spring. The **MT600** system is capable of linking up to three blinds off one chain, making the shading of very large glazed areas a breeze.

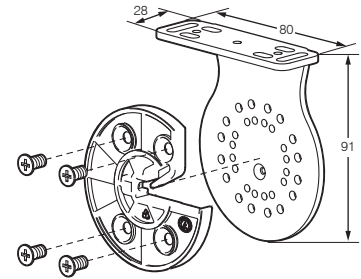
As with all Helioscreen roller blinds, stainless steel chain comes standard.

TECHNICAL INFORMATION: BRACKETS

Size	80 x 28mm fixing plate 91mm projection
Standard colours	White, Black
Details	Chain securing guard on control bracket Locking pin on Idle bracket



Control side bracket



Pin side bracket

TECHNICAL INFORMATION: ROLLER TUBE

Roller tube	60mm extruded aluminium 1.94mm wall thickness 8mm fabric slot with 7 strengthening fins
Control	High tensity wound steel wire coiled spring booster Stainless Steel or Plastic Chain
Idler	Snap lock spring loaded idle pin

HEAVY DUTY CHAIN WINDER SYSTEM

