

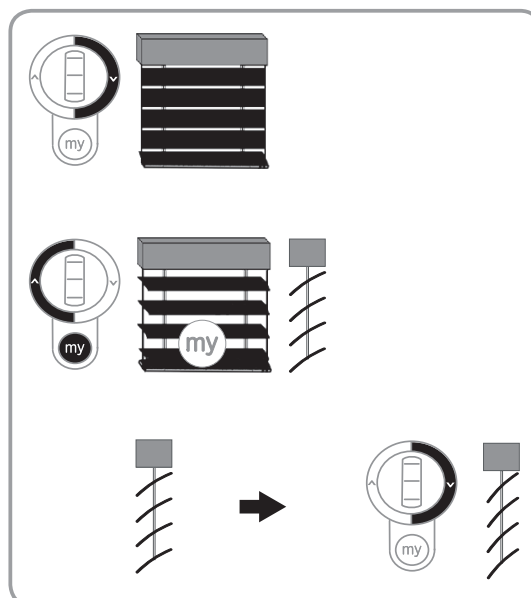
## 7. ADDITIONAL SETTINGS

### 7.1. Favourite position (my)

#### 7.1.1. Modifying/Activating the favourite (my) position

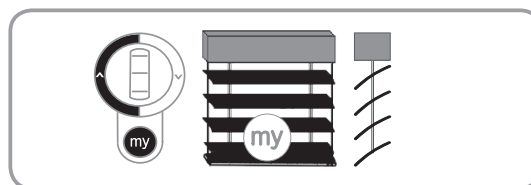
- Press the Down button (the E.V.B. moves to the lowered position with the slats closed).
- Press and hold the "my" and Up buttons for 2 seconds (the slats tilt to the pre-programmed "my" position).
- Position the slats as required, using the thumbwheel of the RTS remote control to increase or decrease the slat angle.

Go to the section entitled "Testing the my position" or "Programming the my position".



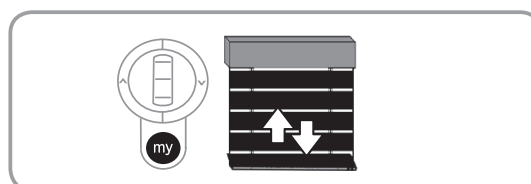
#### 7.1.2. Testing the "my" position (optional step)

- Briefly press the "my" button:  
On a type 1 E.V.B., the slats tilt to the closed position then move to the newly set "my" position.  
On a type 3 E.V.B., the slats move back to the horizontal position then move to the newly set "my" position.



#### 7.1.3. Programming the "my" position

In the "my" position, press and hold the "my" button for 5 seconds: the E.V.B. moves briefly and the "my" position has been programmed.



#### 7.1.4. Deleting the favourite (my) position

- Press the Down button (the E.V.B. moves to the lowered position with the slats closed).
- Press and hold the "my" and Up buttons for 2 seconds: the slats will tilt to the programmed "My" position.
- Press and hold the "my" and Up buttons for 5 seconds: the E.V.B. moves briefly; the "my" position is deleted (the "my" button now works only as a "STOP" button. If using a sun sensor, the E.V.B. moves to the lowered position when the sun appears).

