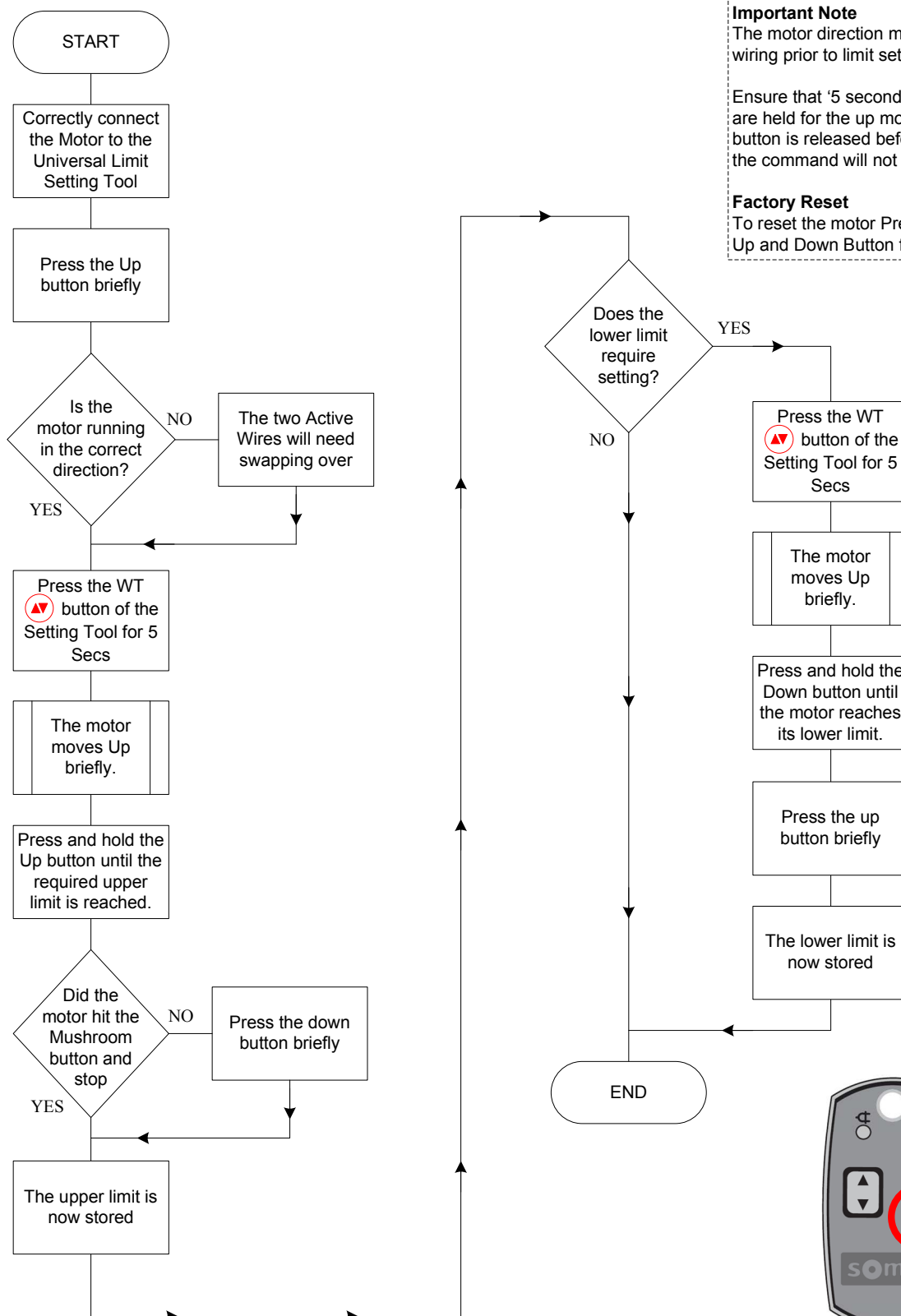


Setting Limits on J4 WT Motors Flowchart



Important Note

The motor direction must be done via wiring prior to limit setting.

Ensure that '5 second' button presses are held for the up movement, if the button is released before the movement the command will not be registered.

Factory Reset

To reset the motor Press and Hold the Up and Down Button for 15 Seconds.



The motor is supplied in the lower end limit position, pre-set with 120 rotations to the upper limit position.

This motor **must** be set with the Universal Setting Tool (9014459).