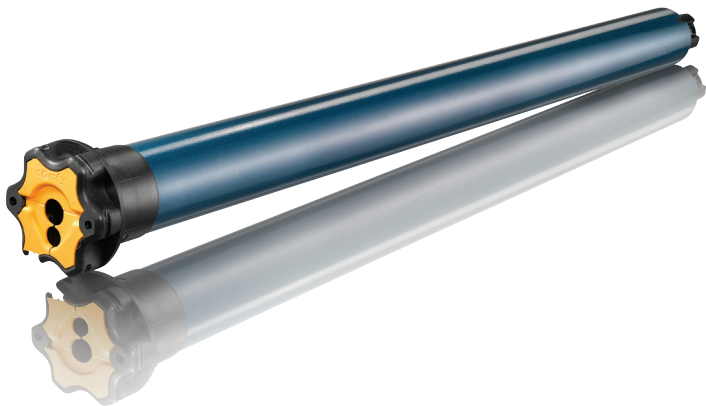


Maestria 50 RTS

Programming Guide



Maestria 50 RTS

Manual limit setting

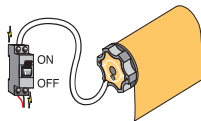


*The motor will move continuously if the Up or Down buttons are held for more than a few seconds. Use the **my** button to stop.

Obstacle detection works when the correct weight of the load bar is used in the application. Check with your product manufacturer if the obstacle detection does not work.

1 Power on the motor

Switch on the power to the motor



Only connect one motor at a time.

2 Check the motor's rotation direction



When using a multi-channel RTS control, remember to select the desired channel prior to programming.



Hold Up and Down together until it jiggles.



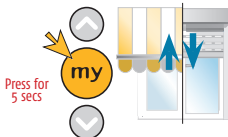
Press and hold the Down button. Does the product extend?

YES - The product extends while pressing the Down button - Go to step 4

NO - The product retracts while pressing the Down button - Continue to step 3

3 Reverse the direction of rotation

To reverse the direction of the motor, press and hold the **my** button until the product jiggles.



Press and hold the Down button to test that the motor direction is correct.

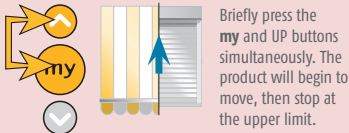
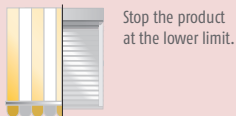
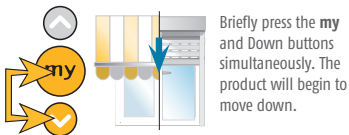
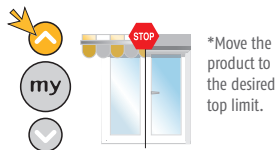


Continue to step 4

Maestria 50 RTS

Manual limit setting

4 Set limits



5 Programming the RTS control to the motor

Press the program button on the RTS control until the product jiggles.



Smooove RTS

OR



Situo RTS

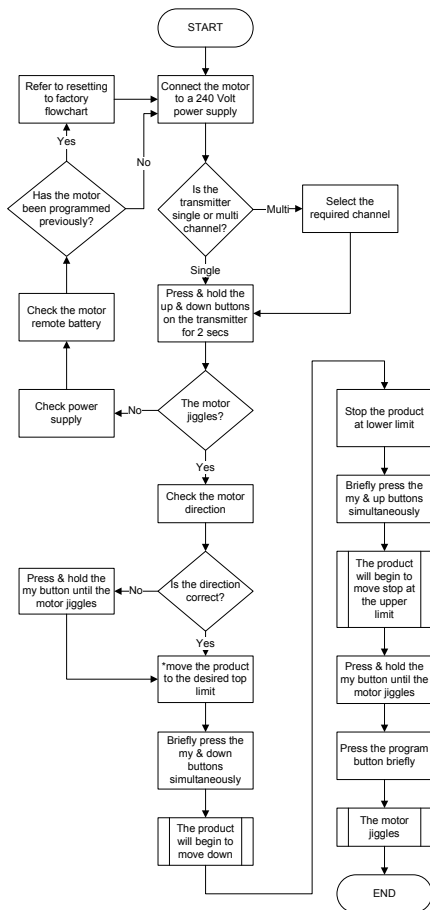


jiggle = control recorded ✓

Check functionality Complete ✓

Maestria 50 RTS

Manual limit setting



*The motor will move continuously if the up or down buttons are held for more than a few seconds. Use the stop button to stop.

Obstacle detection works when the correct weight of the load bar is used in the application. Check with your product manufacturer if the obstacle detection does not work.

STOP = MY

Maestria 50 RTS

Semi-automatic limit setting

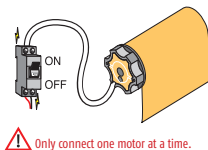


Note: Semi-automatic setting mode is only compatible with screens featuring a hard stop at the upper end limit. The motor will move continuously if the Up or Down buttons are held for more than a few seconds. Use the **my** button to stop.

Obstacle detection works when the correct weight of the load bar is used in the application. Check with your product manufacturer if the obstacle detection does not work.

1 Power on the motor

Switch on the power to the motor



! Only connect one motor at a time.

2 Check the motor's rotation direction



When using a multi-channel RTS control, remember to select the desired channel prior to programming.



Hold Up and Down together until it jiggles.



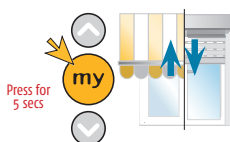
Press and hold the Down button. Does the product extend?

YES - The product extends while pressing the Down button - Go to step 4

NO - The product retracts while pressing the Down button - Continue to step 3

3 Reverse the direction of rotation

To reverse the direction of the motor, press and hold the **my** button until the product jiggles.



Press and hold the Down button to test that the motor direction is correct.



Continue to step 4

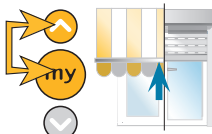
Maestria 50 RTS

Semi-automatic limit setting

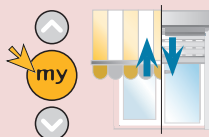
4 Semi-automatic limit setting



Position the screen at the desired lower limit.



Press **my** and Up, the screen raises. Press **my** to stop the screen.



Press and hold the **my** button to save the lower limit. The motor will jiggle.

5 Programming the RTS control to the motor

Press the program button on the RTS control until the product jiggles.

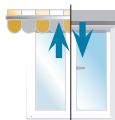


Smoove RTS

OR



Situo RTS



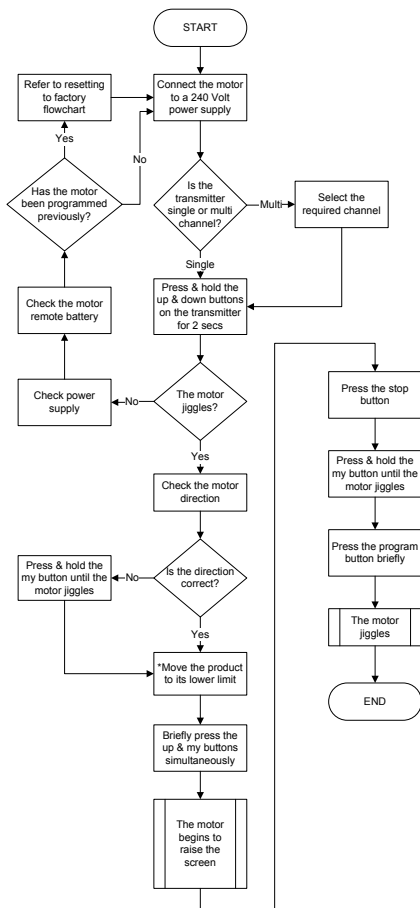
jiggle = control recorded

Check functionality
Complete



Maestria 50 RTS

Semi-automatic limit setting



Automatic setting at UP end limit is only compatible with screens featuring a hard stop.

*The motor will move continuously if the up or down buttons are held for more than a few seconds. Use the stop button to stop.

Obstacle detection works when the correct weight of the load bar is used in the application. Check with your product manufacturer if the obstacle detection does not work.

STOP = MY

Maestria 50 RTS

Automatic limit setting

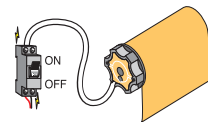
Note: Automatic mode is only compatible with screens fitted with hard up and lower stops.

The motor will move continuously if the Up or Down buttons are held for more than a few seconds. Use the **my** button to stop.

Obstacle detection works when the correct weight of the load bar is used in the application. Check with your product manufacturer if the obstacle detection does not work.

1 Power on the motor

Switch on the power to the motor



 Only connect one motor at a time.

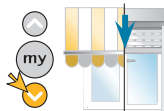
2 Check the motor's rotation direction



When using a multi-channel RTS control, remember to select the desired channel prior to programming.



Hold Up and Down together until it jiggles.



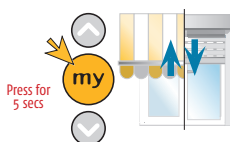
Press and hold the Down button. Does the product extend?

YES – The product extends while pressing the Down button – Go to step 4

NO – The product retracts while pressing the Down button – Continue to step 3

3 Reverse the direction of rotation

To reverse the direction of the motor, press and hold the **my** button until the product jiggles.



Press and hold the Down button to test that the motor direction is correct.

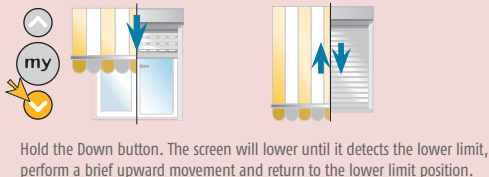
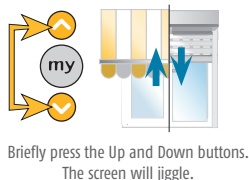
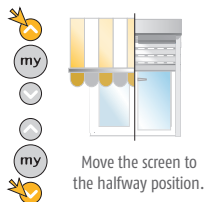


Continue to step 4

Maestria 50 RTS

Automatic limit setting

4 Automatic limit setting



5 Programming the RTS control to the motor

Press the program button on the RTS control until the product jiggles.

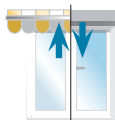


Smoove RTS

OR



Situo RTS



Check functionality
Complete

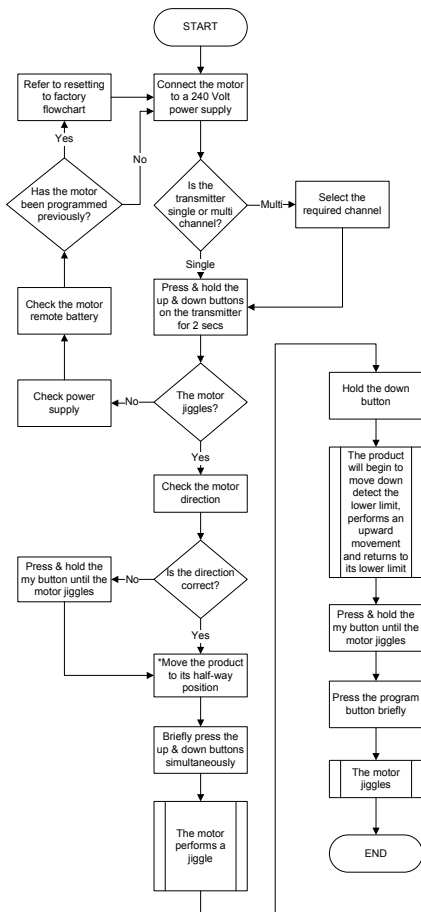


jiggle = control recorded



Maestria 50 RTS

Automatic limit setting



Automatic setting at UP and LOWER end limits is only compatible with screens featuring a hard stop.

*The motor will move continuously if the up or down buttons are held for more than a few seconds. Use the stop button to stop.

Obstacle detection works when the correct weight of the load bar is used in the application. Check with your product manufacturer if the obstacle detection does not work.

STOP = MY

Note: If the motor is inactive for 2 seconds during mode change, it will automatically return to user mode.

Obstacle detection works when the correct weight of the load bar is used in the application. Check with your product manufacturer if the obstacle detection does not work.

1 Enter programming mode



Move the product to its half-way position.



Briefly press **my** and Up and again hold **my** and Up until the motor jiggles.

Press briefly



Hold



To activate obstacle detection move to step 2
To deactivate obstacle detection move to step 3

2 Activate obstacle detection

Briefly press the down button.
The motor will jiggle slow.



Press and hold the **my** button until
the motor jiggles.



3 Deactivate obstacle detection

Briefly press the up button.
The motor will jiggle slow.



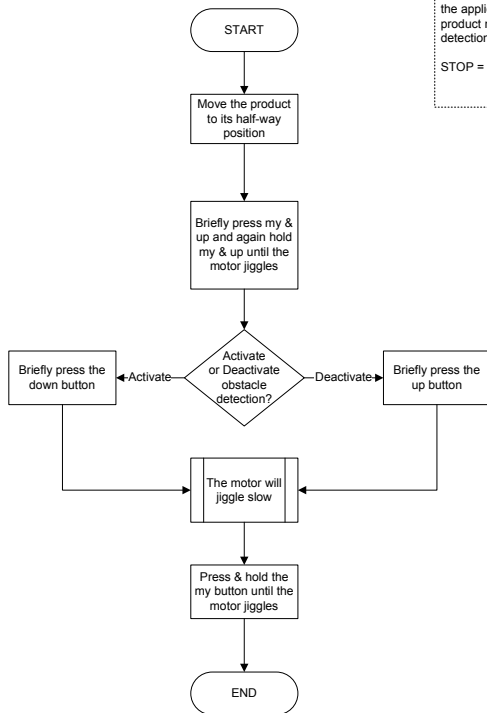
Press and hold the **my** button until
the motor jiggles.



If the motor is inactive for 2 seconds during mode change, it will automatically return to user mode.

Obstacle detection works when the correct weight of the load bar is used in the application. Check with your product manufacturer if the obstacle detection does not work.

STOP = MY



Maestria 50 RTS

Manual setting with **automatic locks at the lower limit



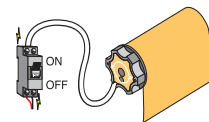
*The motor will move continuously if the Up or Down buttons are held for more than a few seconds. Use the **my** button to stop.

**Requires the product to be equipped with automatic locks at the lower limit.

Obstacle detection works when the correct weight of the load bar is used in the application. Check with your product manufacturer if the obstacle detection does not work.

1 Power on the motor

Switch on the power to the motor



Only connect one motor at a time.

2 Check the motor's rotation direction



When using a multi-channel RTS control, remember to select the desired channel prior to programming.



Hold Up and Down together until it jiggles.



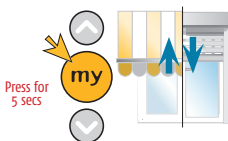
Press and hold the Down button. Does the product extend?

YES - The product extends while pressing the Down button - Go to step 4

NO - The product retracts while pressing the Down button - Continue to step 3

3 Reverse the direction of rotation

To reverse the direction of the motor, press and hold the **my** button until the product jiggles.



Press and hold the Down button to test that the motor direction is correct.



Continue to step 4

Maestria 50 RTS

Manual setting with **automatic locks at the lower limit

4 Limit setting



Move the product to its halfway position.

Press for 7 secs



Press and hold the Up & Down buttons for 7 seconds. The motor performs a jiggle and then a second slower jiggle.



*Move the product to the desired top limit.



Briefly press the **my** and Down buttons simultaneously. The product will begin to move down.



Stop the product at lower limit just below the automatic lock.

5 Set automatic locks lower limit



Briefly press the **my** and Up buttons simultaneously. The product will begin to move up and tension against automatic lock.



*Press the Down button until the product unlocks.



Press and hold the **my** button until the motor jiggles.

Maestria 50 RTS

Manual setting with **automatic locks at the lower limit



6

Programming the RTS control to the motor

Press the program button on the RTS control until the product jiggles.

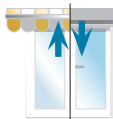


Smoove RTS

OR



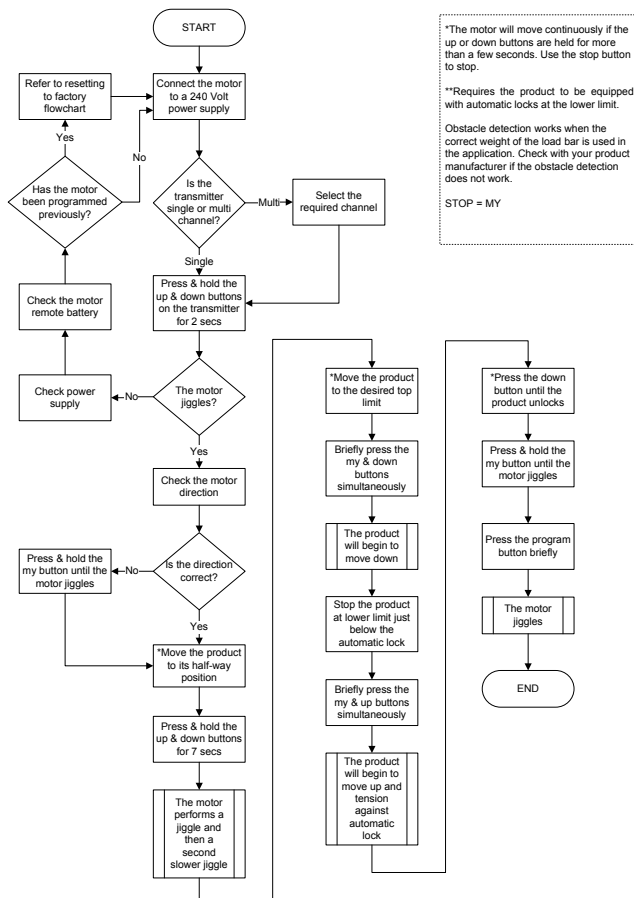
Situo RTS



jiggle = control recorded ✓

Check functionality
Complete





Maestria 50 RTS

Semi-automatic setting with **automatic locks at the lower limit



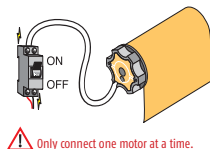
*The motor will move continuously if the Up or Down buttons are held for more than a few seconds. Use the **my** button to stop.

**Requires the product to be equipped with automatic locks at the lower limit.

Obstacle detection works when the correct weight of the load bar is used in the application. Check with your product manufacturer if the obstacle detection does not work.

1 Power on the motor

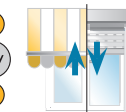
Switch on the power to the motor



2 Check the motor's rotation direction



When using a multi-channel RTS control, remember to select the desired channel prior to programming.



Hold Up and Down together until it jiggles.



Press and hold the Down button. Does the product extend?

YES - The product extends while pressing the Down button - Go to step 4

NO - The product retracts while pressing the Down button - Continue to step 3

3 Reverse the direction of rotation

To reverse the direction of the motor, press and hold the **my** button until the product jiggles.

Press for 5 secs



Press and hold the Down button to test that the motor direction is correct.



Continue to step 4

Maestria 50 RTS

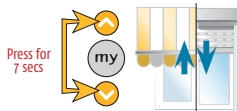
Semi-automatic setting with **automatic locks at the lower limit



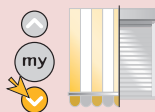
4 Set automatic locks lower limit



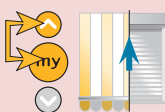
*Move the product to its half-way position.



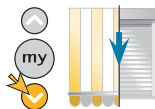
Press and hold the Up & Down buttons for 7 seconds. The motor performs a jiggle and then a second slower jiggle.



*Move the product to the lower limit just below the automatic lock.



Briefly press the **my** and Up buttons simultaneously. The product will begin to move up and tension against automatic lock.



*Press the down button until the product unlocks.



Press & hold the **my** button until the motor jiggles.

5 Programming the RTS control to the motor

Press the program button on the RTS control until the product jiggles.

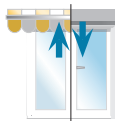


Smoove RTS

OR

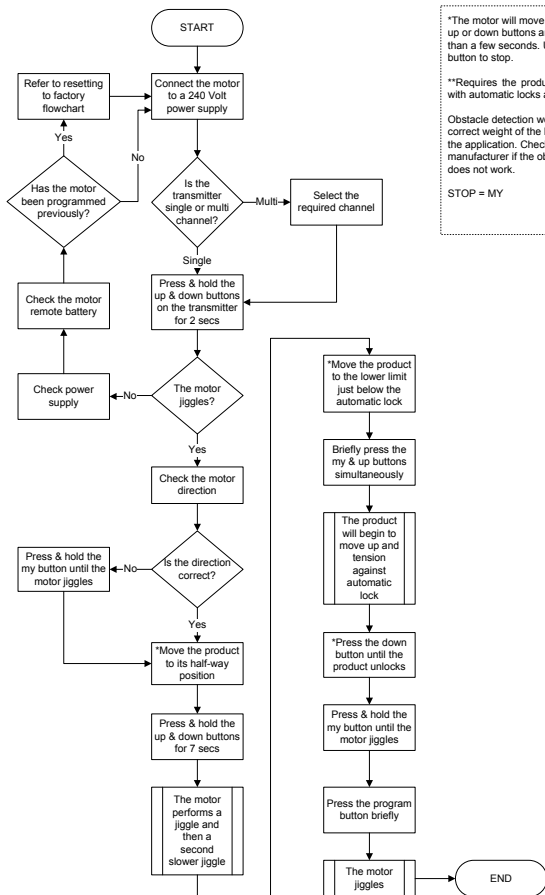


Situo RTS



jiggle = control recorded ✓

Check functionality Complete ✓



*The motor will move continuously if the up or down buttons are held for more than a few seconds. Use the stop button to stop.

**Requires the product to be equipped with automatic locks at the lower limit.

Obstacle detection works when the correct weight of the load bar is used in the application. Check with your product manufacturer if the obstacle detection does not work.

STOP = MY

Maestria 50 RTS

Manual setting with manual locks at the lower limit



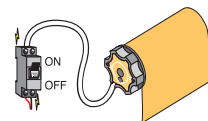
*The motor will move continuously if the Up or Down buttons are held for more than a few seconds. Use the **my** button to stop.

**The manual lock function is deactivated by default. These steps activate the manual lock function. To deactivate, repeat step 6.

Obstacle detection works when the correct weight of the load bar is used in the application. Check with your product manufacturer if the obstacle detection does not work.

1 Power on the motor

Switch on the power to the motor



Only connect one motor at a time.

2 Check the motor's rotation direction



When using a multi-channel RTS control, remember to select the desired channel prior to programming.



Hold Up and Down together until it jiggles.



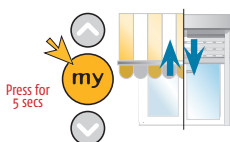
Press and hold the Down button. Does the product extend?

YES - The product extends while pressing the Down button - Go to step 4

NO - The product retracts while pressing the Down button - Continue to step 3

3 Reverse the direction of rotation

To reverse the direction of the motor, press and hold the **my** button until the product jiggles.



Press and hold the Down button to test that the motor direction is correct.



Continue to step 4

Maestria 50 RTS

Manual setting with manual locks at the lower limit



4

Set limits



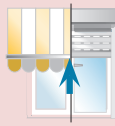
*Move the product to the desired top limit.



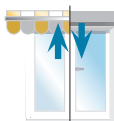
Briefly press the **my** and Down buttons simultaneously. The product will begin to move down.



Stop the product at the lower limit just below the manual lock.



Briefly press the **my** and Up buttons simultaneously. The product will begin to move up and stop at the upper limit.



Press and hold the **my** button until the motor jiggles.

5

Programming the RTS control to the motor

Press the program button on the RTS control until the product jiggles.

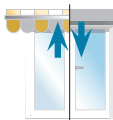


Smoove RTS

OR



Situo RTS



Check functionality
Complete



jiggle = control recorded

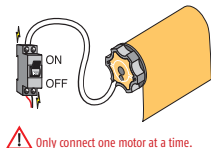


6

Program manual lock function



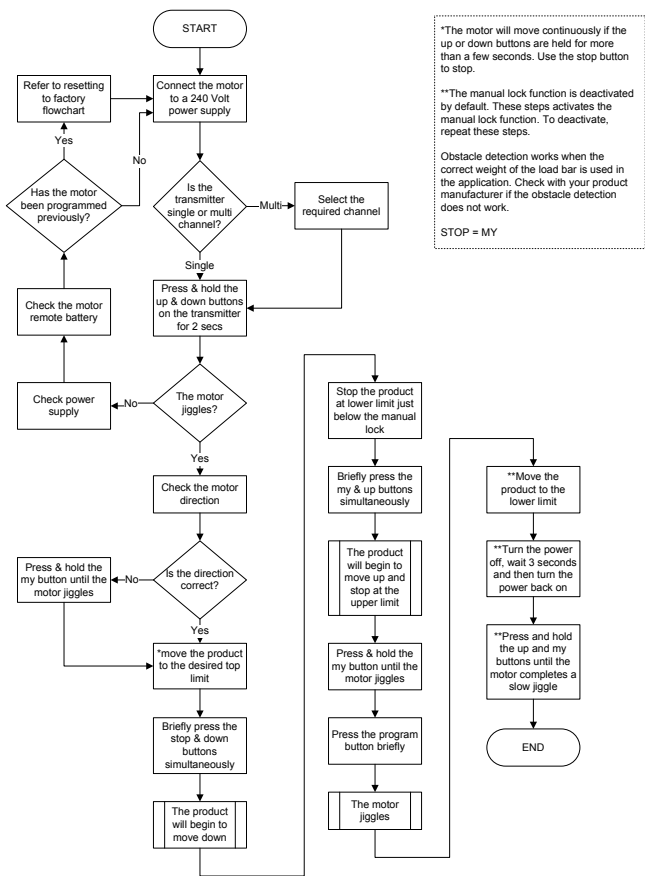
**Move the product to the lower limit.



**Turn the power off, wait 3 seconds, then turn the power back on.



Press and hold the Up and **my buttons until the motor completes a slow jiggle.



Note: Semi-automatic setting with manual locks at the lower limit is only compatible with screens featuring a hard upper stop and manual locks.

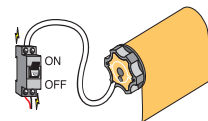
*The motor will move continuously if the Up or Down buttons are held for more than a few seconds. Use the **my** button to stop.

**The manual lock function is deactivated by default. These steps activate the manual lock function. To deactivate, repeat step 6.

Obstacle detection works when the correct weight of the load bar is used in the application. Check with your product manufacturer if the obstacle detection does not work.

1 Power on the motor

Switch on the power to the motor



 Only connect one motor at a time.

2 Check the motor's rotation direction



When using a multi-channel RTS control, remember to select the desired channel prior to programming.



Hold Up and Down together until it jiggles.



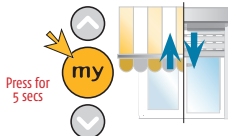
Press and hold the Down button. Does the product extend?

YES - The product extends while pressing the Down button - Go to step 4

NO - The product retracts while pressing the Down button - Continue to step 3

3 Reverse the direction of rotation

To reverse the direction of the motor, press and hold the **my** button until the product jiggles.



Press and hold the Down button to test that the motor direction is correct.



Maestria 50 RTS

Semi-automatic setting with manual locks at the lower limit



4

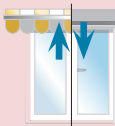
Semi-automatic limit setting



Position the screen at the desired lower limit, just below the manual lock.



Press **my** and Up, the product will begin to move and stop at the upper limit.



Press and hold the **my** button until the motor jiggles.

5

Programming the RTS control to the motor

Press the program button on the RTS control until the product jiggles.

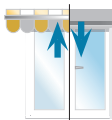


Smoove RTS

OR



Situo RTS



jiggle = control recorded

Check functionality
Complete



Maestria 50 RTS

Semi-automatic setting with manual locks at the lower limit

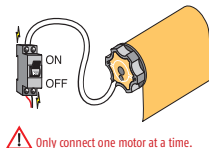


6

Program manual lock function



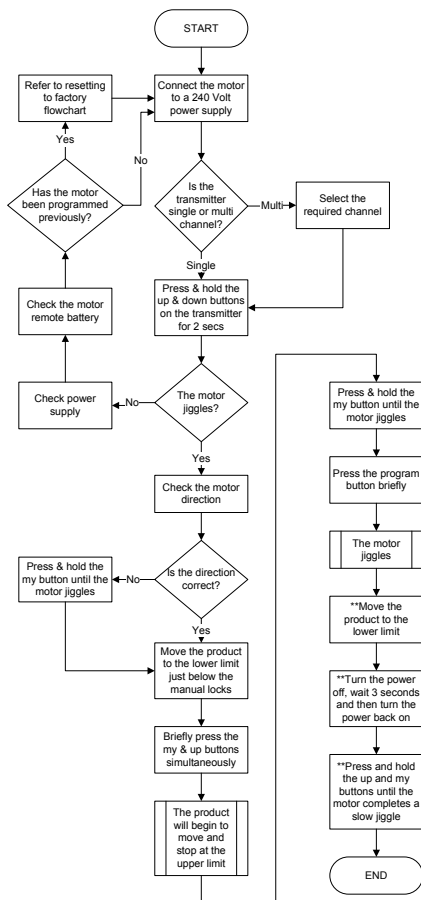
**Move the product to the lower limit.



**Turn the power off, wait 3 seconds, then turn the power back on.



Press and hold the Up and **my buttons until the motor completes a slow jiggle.



Automatic setting at UP end limit is only compatible with screens featuring a hard stop.

*The motor will move continuously if the up or down buttons are held for more than a few seconds. Use the stop button to stop.

**The manual lock function is deactivated by default. These steps activates the manual lock function. To deactivate, repeat these steps.

Obstacle detection works when the correct weight of the load bar is used in the application. Check with your product manufacturer if the obstacle detection does not work.

STOP = MY

For all technical enquiries please call:

Somfy Support Centre

t: +61 (2) 8845 7200

Somfy Pty Limited

Australia

Toll Free 1800 076 639

t: 02 8845 7200

e: somfy.au@somfy.com

New Zealand

Toll Free 0800 276 639

e: somfy.nz@somfy.com

Shop online

shopsomfy.com.au

somfypro.com.au

somfy.com.au

somfy.co.nz