

SCH 43 95 50/70

INTERNAL MANUAL TOTAL BLACKOUT ROLLER BLINDS



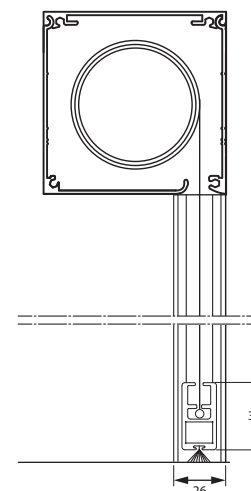
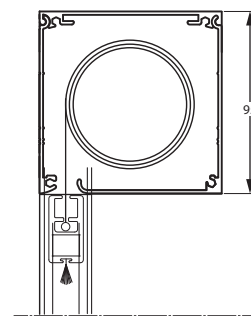
The Helioscreen **Total Blackout System** offers the solution for home theatres, bedrooms, boardrooms and conference rooms where a near complete light block is required. The system comprises of a cleverly designed 95mm square headbox that conceals the roller blind, and aluminium side channels with compressable brush seals that prevent light bleed around the fabric. When the blind is down the brush seal that is on the base bar completes the blackout effect.

SYSTEM SPECIFICATIONS

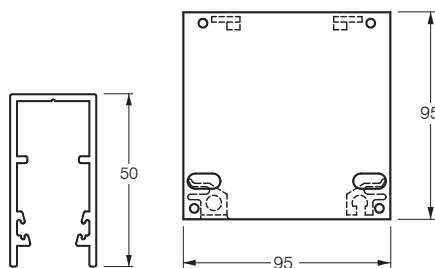
Minimum width	600mm
Maximum width	2000mm (for SCH 43 95 50) 2400mm (for SCH 43 95 70)
Maximum drop	3200mm
Linkable	No
Light gaps	Zero light gaps

TECHNICAL INFORMATION

Headbox	3 piece extruded aluminium
Channels	50mm or 70mm extruded aluminium Compressable brush seals
Roller tube	43mm extruded aluminium 1.1mm wall thickness, with 6 strengthening fins
Chain winder	UVS Acetal and Nylon 6 Spring lock friction system Stainless steel or plastic chain
Idler	Spring loaded idle Pin



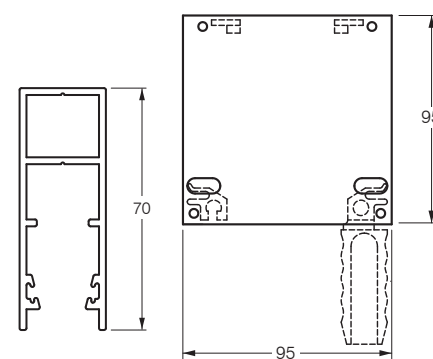
SCH 43 95 50 System (50mm Channels)



50mm
side channel

Headbox endcap for
50mm side channels

SCH 43 95 70 System (70mm Channels)

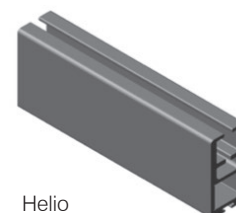
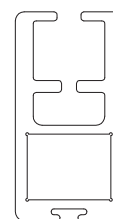


70mm
side channel

Headbox endcap for
70mm side channels

TECHNICAL INFORMATION: BASEBARS

Size	18 x 35mm extruded aluminium with compressable brush seal
------	--



Helio