

**BECKER CENTRONIC PLUS MOTOR, ADDING CENTRONIC SUN,WIND SENSOR OR MOTION SENSOR TO AN EXISTING INSTALLATION & SETTING PROTECTION LEVELS FLOWCHART PAGE 1 BCPFC 006-1**

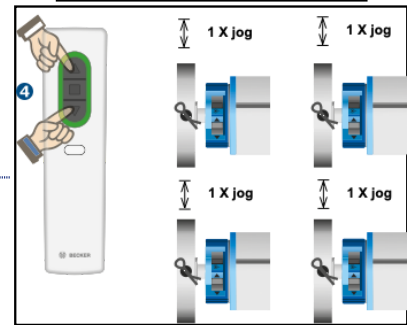
START: USE A SWC PLUS REMOTE ALREADY PROGRAMMED IN THE CURRENT NETWORK

**CAUTION! MOTOR LIMITS MUST ALREADY BE PROGRAMMED BEFORE PROCEEDING**

1  
PRESS AND HOLD PROGRAM BUTTON (1) ON THE BACK OF THE REMOTE FOR 3 SECONDS. THIS PROMPTS THE TRANSMITTER TO SEARCH FOR ALL MOTORS AND SENSORS IN THE SAME NETWORK. DURING SEARCH LED RING WILL CONTINUALLY CHANGE COLOUR (2). THE CLOSEST MOTOR TO THE TRANSMITTER WILL MAKE 1 X JOG THEN LED RING WILL TURN GREEN (3)



2  
USING THE UP AND DOWN BUTTONS SELECT THE MOTOR THAT YOU WANT TO PROGRAM THE CENTRONIC SENSOR TO. AS YOU CYCLE THROUGH THE MOTORS, EACH MOTOR WILL MAKE 1 X JOG. STOP CYCLING ON THE DESIRED MOTOR AFTER MOTOR MAKES 1 X JOG.



3  
TO ENTER SETTING MODE, BRIEFLY PRESS AND RELEASE THE PROGRAM BUTTON(5) ON THE BACK OF THE REMOTE. LED RING WILL PULSE IN AND OUT LIGHT BLUE (6)

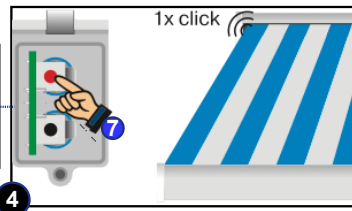


MOTION SENSOR SC211a

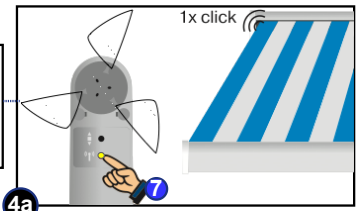
OR

240V WIND SENSOR SC711a, SUN & WIND SENSOR SC811a. SOLAR POWERED SUN & WIND SENSOR SC861a

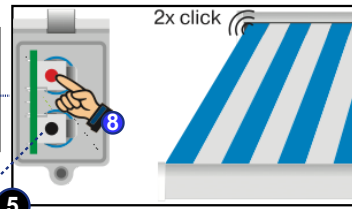
4  
PRESS THE RED PROGRAM BUTTON (7) ON THE MOTION SENSOR UNTIL MOTOR MAKES 1 X Click.



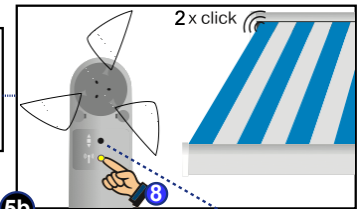
4a  
PRESS THE YELLOW PROGRAM BUTTON (7) ON THE SENSOR UNTIL MOTOR MAKES 1 X Click.



5  
AGAIN PRESS THE RED PROGRAM BUTTON (8) ON THE MOTION SENSOR UNTIL MOTOR MAKES 2 X Click.



5b  
AGAIN PRESS THE YELLOW PROGRAM BUTTON (8) ON THE SENSOR UNTIL MOTOR MAKES 2 X Click.

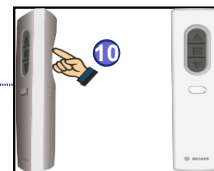


BACK CONTROL BUTTON 9

6  
CHECK OPERATION BY BRIEFLY PRESSING THE BLACK CONTROL BUTTON (9) ON THE SENSOR. MOTOR SHOULD OPERATE VIA THIS BUTTON IN THE FOLLOWING SEQUENCE (RETRACT/EXTEND-STOP-EXTEND/RETRACT-STOP)

BACK CONTROL BUTTON 9

END  
AFTER CHECKING OPERATION VIA BLACK CONTROL BUTTON. EXIT SETTING MODE BY PRESSING AND HOLDING THE PROGRAMMING BUTTON (10) ON THE BACK OF THE REMOTE FOR 3 SECONDS UNTIL THE LED RING LIGHT GOES OUT



# BECKER CENTRONIC PLUS MOTOR, ADDING CENTRONIC SUN, WIND SENSOR OR MOTION SENSOR TO AN EXISTING INSTALLATION & SETTING PROTECTION LEVELS FLOWCHART PAGE 2 BCPFC 006-2

START: USE A SWC PLUS REMOTE ALREADY PROGRAMMED IN THE CURRENT NETWORK

**CAUTION! MOTOR LIMITS MUST ALREADY BE PROGRAMMED BEFORE PROCEEDING**

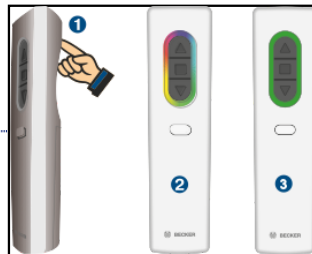
C12a Plus Motor, Factory Default Protection Levels:  
**SUN = LEVEL 7\***  
**WIND = LEVEL 5\***  
**RAIN = RETRACT\***  
 \*Note: Please change according to the awning manufactures specifications

**SCAN HERE !**

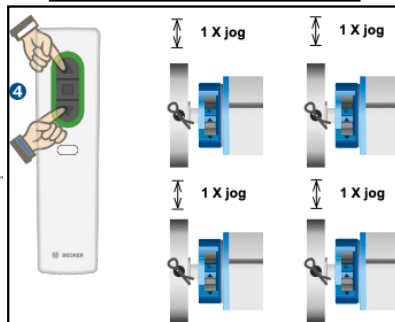


**VIDEO INSTRUCTIONS**

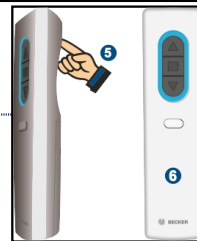
**1** PRESS AND HOLD PROGRAM BUTTON (1) ON THE BACK OF THE REMOTE FOR 3 SECONDS. THIS PROMPTS THE TRANSMITTER TO SEARCH FOR ALL MOTORS AND SENSORS IN THE SAME NETWORK. DURING SEARCH LED RING WILL CONTINUALLY CHANGE COLOUR (2). THE CLOSEST MOTOR TO THE TRANSMITTER WILL MAKE 1 X JOG THEN LED RING WILL TURN GREEN (3)



**2** USING THE UP AND DOWN BUTTONS SELECT THE MOTOR THAT YOU WANT TO SET THE PROTECTION LEVELS ON. AS YOU CYCLE THROUGH THE MOTORS, EACH MOTOR WILL MAKE 1 X JOG. STOP CYCLING ON THE DESIRED MOTOR AFTER MOTOR MAKES 1 X JOG.



**3** ENTER SETTING MODE BY PRESSING BRIEFLY THE PROGRAM BUTTON ON THE BACK OF THE REMOTE (5) LED RING WILL PULSE IN AND OUT LIGHT BLUE (6)



**4** TO ENTER PROTECTION LEVEL ADJUSTMENT. PRESS AND HOLD THE FUNCTION BUTTON (7) FOR APPROX. 3 SECONDS UNTIL LED RING CHANGES TO YELLOW. THIS NOW SHOWS THE (SUN LEVEL). TO ADJUST LEVELS, USE THE UP BUTTON TO INCREASE AND DOWN BUTTON TO DECREASE (8). TO MOVE TO WIND LEVEL PRESS & RELEASE FUNCTION BUTTON BRIEFLY (9), THE LED RING WILL TURN RED (WIND LEVEL). TO MOVE TO RAIN FUNCTION PRESS AND RELEASE THE FUNCTION BUTTON BRIEFLY (10). THE LED RING WILL TURN BLUE. SEE TABLES BELOW FOR THRESHOLD LEVELS AND ADJUSTMENT.

**SETTING SUN, WIND & RAIN LEVELS (SWC54XX Plus Remote)**

WHEN ALL LEVELS HAVE BEEN SET. EXIT BY PRESSING AND HOLDING THE PROGRAMMING BUTTON (11) FOR 3 SECONDS UNTIL THE LED RING LIGHT GOES OUT. MOTOR MAKES



**BECKER SUN, WIND & RAIN PROTECTIONS LEVELS**

SUN THRESHOLD: 15 LEVELS															2 klux to 100 klux approx.
01	02	03	04	05	06	07	08	09	10	11	12	13	14	15	LEVEL
02	09	16	23	30	37	44	51	58	65	72	79	86	93	100	klux approx.
OVERCAST		FULL DAYLIGHT (NOT DIRECT SUN)			DIRECT SUNLIGHT LOW TO EXTREME HIGH										

WIND THRESHOLD: 11 LEVELS											2m/s to 22 m/s approx.
01	02	03	04	05	06	07	08	09	10	11	LEVEL
7	14	22	29	36	43	50	58	65	72	79	km/h approx.

RAIN OFF/ DIRECTION		
RETRACT	OFF	EXTEND
▲	✕	▼